






### 52 Nelson Avenue Flinders Park SA

4  1  3 

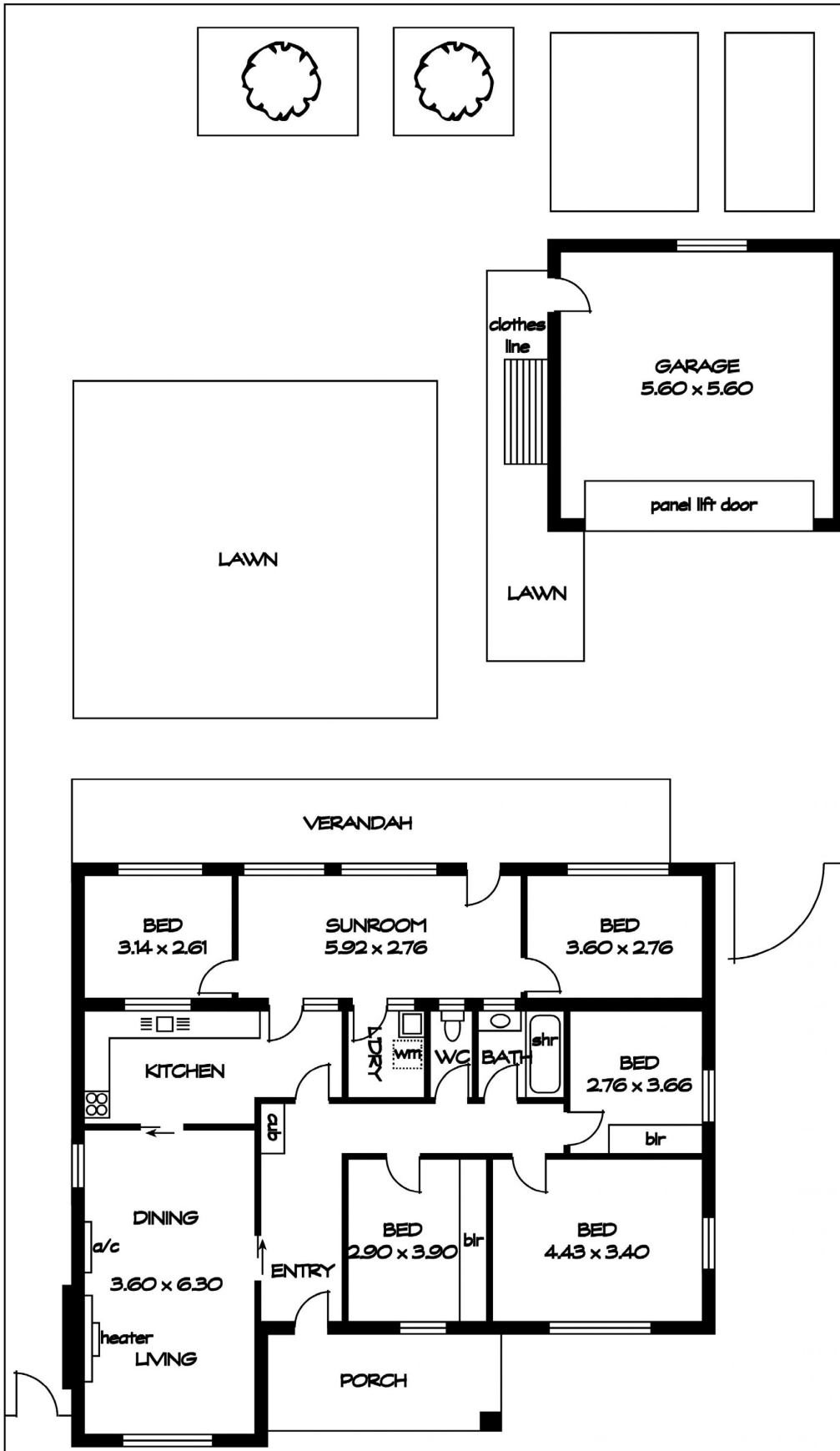
This solid brick family residence Circa 1950's set on a good sized allotment with loads of potential situated midway between the city and coast and so convenient to all your shopping needs such as Findon Shopping Centre, Coles, Aldi, cafe's, restaurants, QEH services, transport, primary and secondary high schools .Only 8 km's from the C.B.D. and easy access to the City Centre and the R.A.H.Hospital and popular Henley Square restaurants & cafe's.

**Price** : \$ 799,000

**View** : <https://www.peterravese.com.au/sale/sa/western-beachside-suburbs/flinders-park/residential/house/7751115>

Significant features include :

- Entrance hall
- 9ft ceilings
- Split system air conditioning
- Formal lounge / dining area



AREAS (approx)	m <sup>2</sup>
LIVING:	139
GARAGE:	37
VERANDAH:	22
PORCH:	10
<b>TOTAL</b>	<b>208</b>