



30 Glengarry Street Woodville South SA

4  1  4 

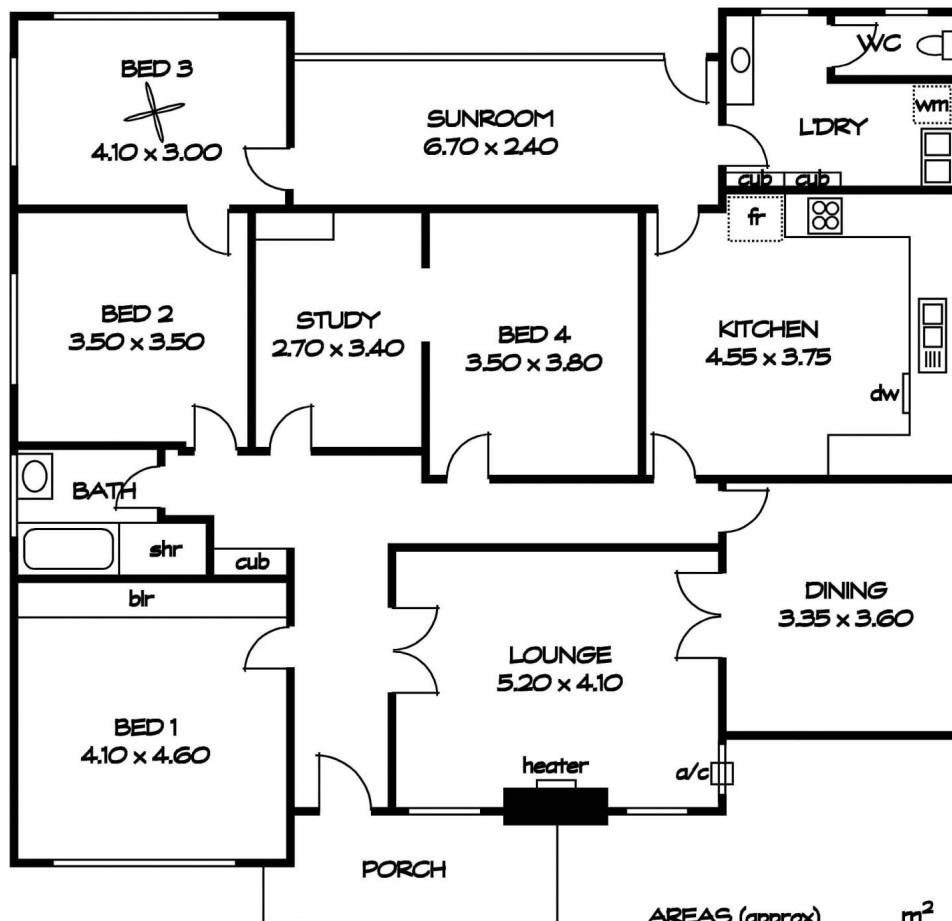
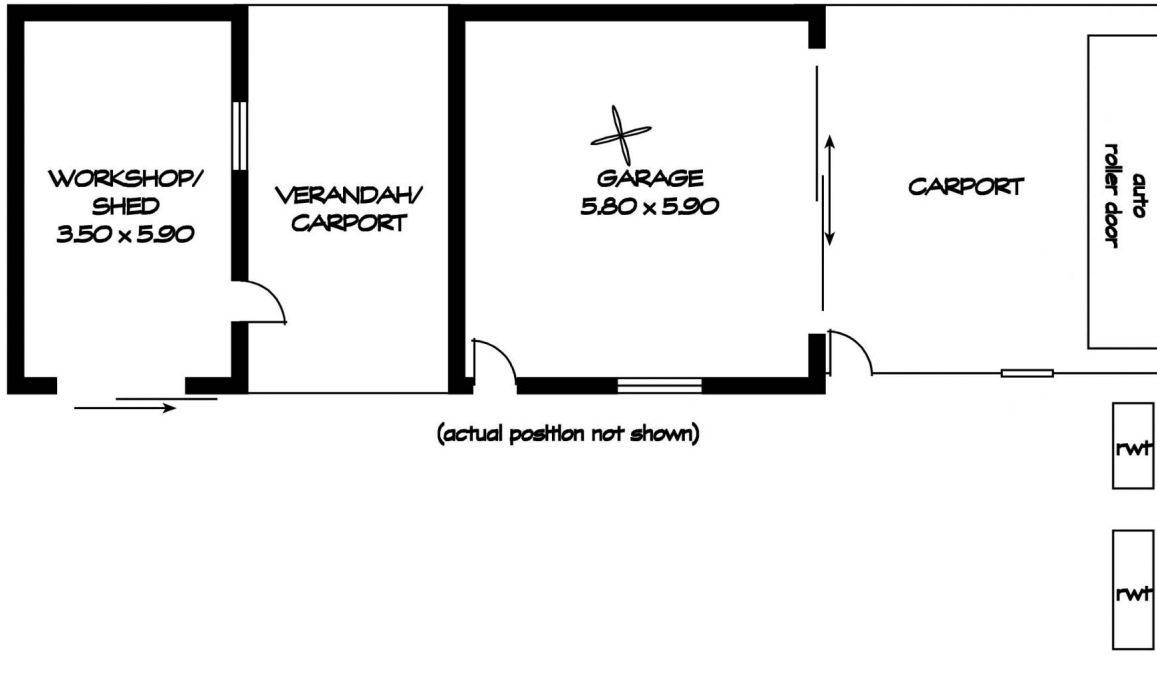
Very spacious family residence circa 1950's situated midway between the city and the coast. Greatly located to all your shopping needs, cafe's , restaurants, New Q.E.H. services , transport options, primary & secondary high schools. Only 8 km's to the C.B.D. and easy access to the city centre and the new R.A.H. hospital and the world class Adelaide Oval precinct and park land facilities.

Type : House
Land Size : 835 sqm
View : <https://www.peterravese.com.au/sale/sa/western-beachside-suburbs/woodville-south/residential/house/8187034>

Significant features include :

- Wide entrance hall
- Quality light fittings

[For full version visit the website](https://www.peterravese.com.au)



AREAS (approx)

m²

LIVING:	196
GARAGE:	39
CARPORT:	54
PORCH:	8
TOTAL	297